



Air Conditioning & Heating



## PRODUCT SPECIFICATIONS

# ARUF

MULTI-POSITION  
THREE-SPEED  
AIR HANDLER  
WITH GALVANIZED CABINET

1½ TO 5 TON



The Goodman® ARUF Multi-Position Air Handler is suitable for use with refrigerants R-410A and R-22. This unit features a check flowrater expansion device and may be installed in a variety of locations.

### Standard Features

- Certain models are suitable for use with refrigerants R-410A and R-22 (see Nomenclature Chart on Page 2).
- Check flowrater expansion device for cooling-only and heat pump applications
- Direct-drive, multi-speed motor
- Transformer and blower time-delay on all units

### Accessories

- 3 kW to 21 kW electric heat kits available as field-installed options
- Permanent washable plastic air filters
- Thermal Expansion Valve Kits for air conditioning-only applications
- Coil Insulation Kits for downflow applications
- Horizontal drain pan insulation kits

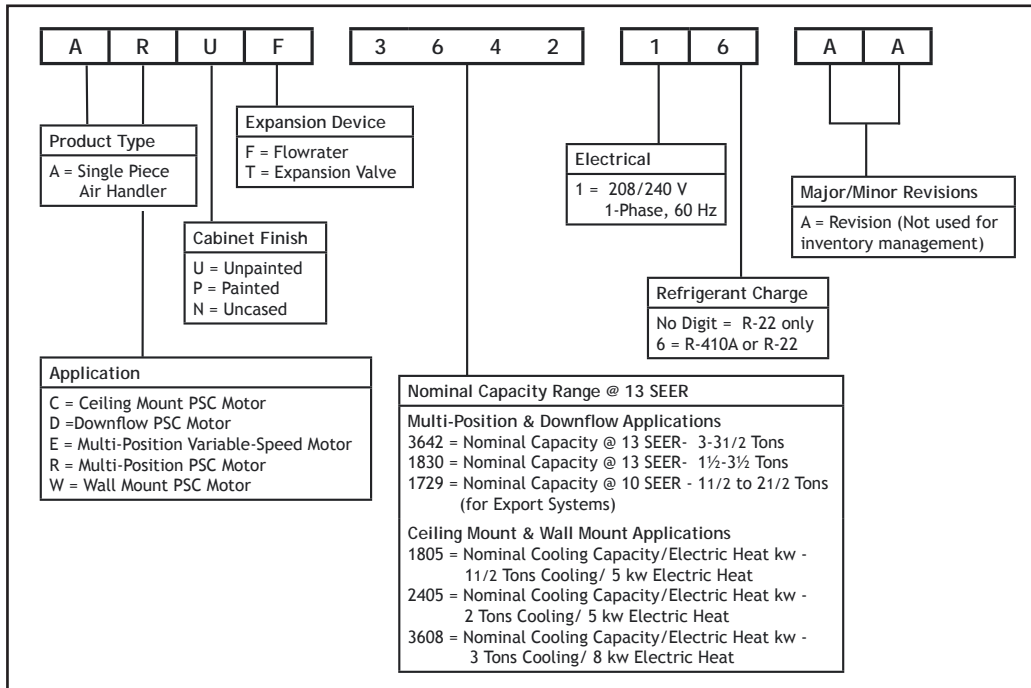
### Cabinet Features

- Rust-resistant, fully insulated steel cabinet
- Galvanized, stucco-embossed finish
- Attractive Architectural Gray painted front panels
- Built-in coil has horizontal, vertical and downflow drain pans with secondary drain connections
- Built-in filter rack for 1" filter (filter not included)
- Power supply entry at top; low-voltage entry on left side and top

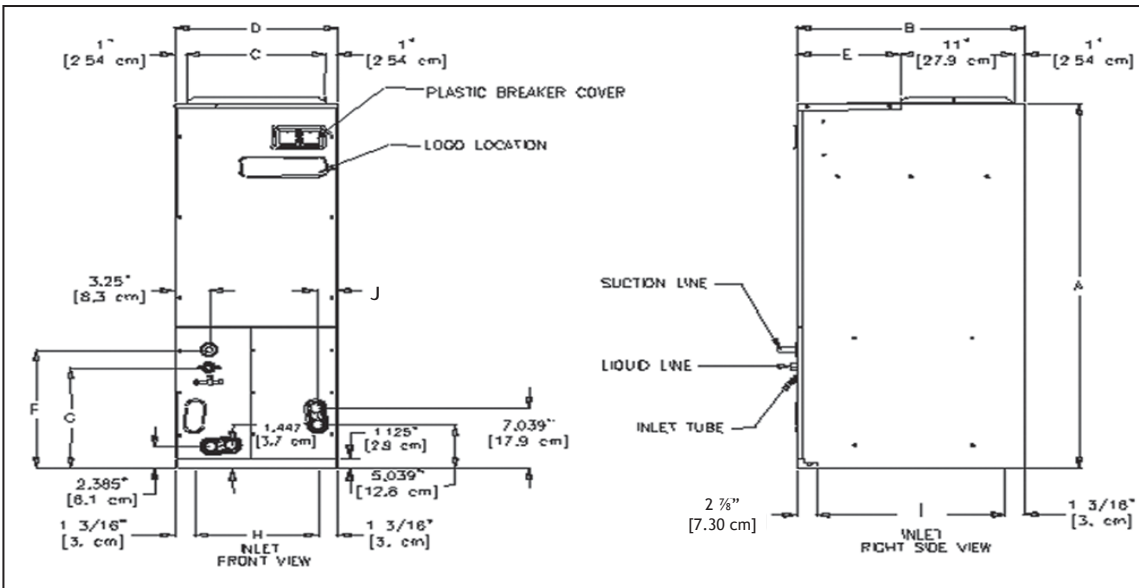


# PRODUCT SPECIFICATIONS

## NOMENCLATURE



## DIMENSIONS



Model	A	B	C	D	E	F	G	H	I	J
ARUF17291*	42 1/8"	22"	13 1/2"	15 1/2"	10"	14 1/2"	11 15/16"	13 3/8"	17 15/16"	2"
ARUF18241*	42 1/8"	22"	13 1/2"	15 1/2"	10"	14 1/2"	11 15/16"	13 3/8"	17 15/16"	2"
ARUF19311*	46 3/4"	22"	17 1/2"	19 1/2"	10"	14 1/2"	11 15/16"	17 7/8"	17 15/16"	2"
ARUF30301*	46 3/4"	22"	17 1/2"	19 1/2"	10"	14 1/2"	11 15/16"	17 7/8"	17 15/16"	2"
ARUF36421*	53 1/4"	24"	20"	22"	12"	14 1/2"	11 15/16"	19 5/8"	19 15/16"	1 13/16"
ARUF37431*	53 1/4"	24"	20"	22"	12"	14 1/2"	11 15/16"	19 5/8"	19 15/16"	1 13/16"
ARUF48601*	53 1/4"	24"	20"	22"	12"	14 1/2"	11 15/16"	19 5/8"	19 15/16"	1 13/16"

## SPECIFICATIONS

	ARUF1729 1/16	ARUF1824 1/16	ARUF1931 1/16	ARUF3030 1/16	ARUF3642 1/16	ARUF3743 1/16	ARUF4860 1/16
<b>Blower</b>							
Diameter	9½"	9½"	9½"	9½"	10⅝"	11 <sup>15</sup> / <sub>16</sub> "	10⅝"
Width	6"	6"	6"	8"	8"	10 <sup>11</sup> / <sub>16</sub> "	10⅝"
Coil Drain Connection FPT	¾"	¾"	¾"	¾"	¾"	¾"	¾"
<b>Service Valve</b>							
Liquid	⅜"	⅜"	⅜"	⅜"	⅜"	⅜"	⅜"
Suction	¾"	¾"	⅞"	¾"	⅞"	⅞"	⅞"
<b>Electrical Data</b>							
Voltage	208/240						
Min Circuit Ampacity	2.1/2.1	2.1/2.1	1.9/1.9	3.3/3.3	3.7/3.7	4.2/4.2	5.4/5.4
MOD* (amps)	15/15						
Minimum VAC	197	197	197	197	197	197	197
Maximum VAC	253	253	253	253	253	253	253
<b>Blower Motor</b>							
FLA	1.7	1.7	1.48	2.64	2.95	3.39	4.3
HP	⅓	⅓	¼	⅓	½	½	¾
Ship Weight (lbs)	110	120	155	144	173	195	192

\* Maximum Overcurrent Protection Device

## BLOWER PERFORMANCE

Model	Motor Speed	CFM delivered against External Static Pressure				
		0.1"	0.2"	0.3"	0.4"	0.5"
ARUF17291/16	High	1,155	1,090	1,025	950	895
	Med	875	830	790	750	715
	Low	640	610	570	535	490
ARUF18241/16	High	1,155	1,090	1,025	950	895
	Med	875	830	790	750	715
	Low	640	610	570	535	490
ARUF19311/16	High	1,135	1,085	1,025	965	915
	Med	860	825	780	750	680
	Low	600	570	545	500	465
ARUF30301/16	High	1,455	1,385	1,330	1,205	1,090
	Med	1,340	1,290	1,230	1,140	1,050
	Low	1,075	1,030	980	910	840
ARUF36421/16	High	1,700	1,680	1,645	1,610	1,535
	Med	1,500	1,480	1,440	1,380	1,325
	Low	1,345	1,320	1,275	1,230	1,195
ARUF37431/16	High	2,065	2,000	1,925	1,860	1,780
	Med	1,685	1,635	1,550	1,470	1,410
	Low	1,490	1,425	1,345	1,280	1,205
ARUF48601/16	High	2,135	2,080	1,985	1,900	1,805
	Med	1,975	1,935	1,875	1,775	1,675
	Low	1,715	1,670	1,650	1,590	1,530

Note: Assumes dry coil with filter in place; SCFM correction for wet coil = 4%

# PRODUCT SPECIFICATIONS

## ACCESSORIES

### HEAT KIT APPLICATIONS

	ARUF1729 1/16	ARUF1824 1/16	ARUF1931 1/16	ARUF3030 1/16	ARUF3642 1/16	ARUF3743 1/16	ARUF4860 1/16
HKR-03*	X	X	X	X	X	X	X
HKR-05*, HKR-05C*	X	X	X	X	X	X	X
HKR-06*	X	X	X	X	X	X	X
HKR-08*, HKR-08C*	X <sup>1</sup>	X <sup>1</sup>	X <sup>1</sup>	X	X	X	X
HKR-10*, HKR-10C*	X <sup>1</sup>	X <sup>1</sup>	X <sup>1</sup>	X <sup>1</sup>	X	X	X
HKR-15C*	X <sup>2</sup>	X <sup>2</sup>	X <sup>2</sup>	X <sup>2</sup>	X <sup>3</sup>	X <sup>3</sup>	X
HKR-20C*				X <sup>2</sup>	X <sup>3</sup>	X <sup>3</sup>	X
HKR-21C*				X <sup>2</sup>	X <sup>3</sup>	X <sup>3</sup>	X
^ HKR3-15*				X <sup>2</sup>	X <sup>3</sup>	X <sup>3</sup>	X
^ HKR3-20*				X <sup>2</sup>	X <sup>3</sup>	X <sup>3</sup>	X

\* Revision level that may or may not be designated

C Circuit breaker option

^ Heat kit requires three-phase power supply

<sup>1</sup> Air handler must either be on medium or high speed

<sup>2</sup> Air handler must be on high speed

<sup>3</sup> For static pressure of 0.6 or higher, air handler must be on medium or high speed

### EXPANSION VALVE KITS FOR AIR CONDITIONING-ONLY APPLICATIONS

Kit Number	Used with	Description
XVB18-36C	ARUF01824 to ARUF01931	20% bleed valve
XVB42-60C	ARUF03642 to ARUF04860	20% bleed valve
XV18-36C	ARUF01824 to ARUF01931	Non-bleed valve
XV42-60C	ARUF03642 to ARUF04860	Non-bleed valve

### EXPANSION VALVE KITS FOR AIR CONDITIONING AND HEAT PUMP APPLICATIONS

#### FOR R-22 SYSTEMS

Valve	Description	Used with Outdoor Units below
TX3N2	Non-bleed valve	3 Ton > Air Conditioner & Heat Pump
TX5N2	Non-bleed valve	3½ Ton < Air Conditioner & Heat Pump

#### FOR R-410A SYSTEMS

Valve	Description	Cap Used with Outdoor Units below
TX3N4	Non-bleed valve	3 Ton > Air Conditioner & Heat Pump
TX5N4	Non-bleed valve	3½ Ton < Air Conditioner & Heat Pump

### DRAIN PAN INSULATION KIT

#### FOR DOWNFLOW APPLICATIONS

Chassis Size	Insulation Kit
Small (15½")	DPI18-30/20
Medium (19½")	DPI36-42/20
Large (22")	DPI48-60/20

Note: Each kit contains enough material to modify 20 coils

### FILTERS

ARUF	Filter #	Qty Required
1729/1824	FIL 18-32	1
1931	FIL-36-42	1
3030	FIL-36-42	1
3642	FIL 48-61	1
3743	FIL 48-61	1
4860	FIL 48-61	1



**Air Conditioning & Heating**

Goodman Manufacturing Company, L.P., reserves the right to discontinue, or change at any time, specifications or designs without notice or without incurring obligations.

Copyright © 2006 • Goodman Manufacturing Company, L.P. • Houston, Texas  
Goodman® brand products are made proudly in the USA.  
Printed in the USA.